



Lorena 2/ Appartement P1

2 pièces

Entrée : 6 sq.m.

Terrasse : 23.42 sq.m.

Salon + cuisine : 28.56 sq.m.

Chambre : 19.65 sq.m.

Salle de bain (1) : 5.49 sq.m.

Entrée : 6 sq.m.

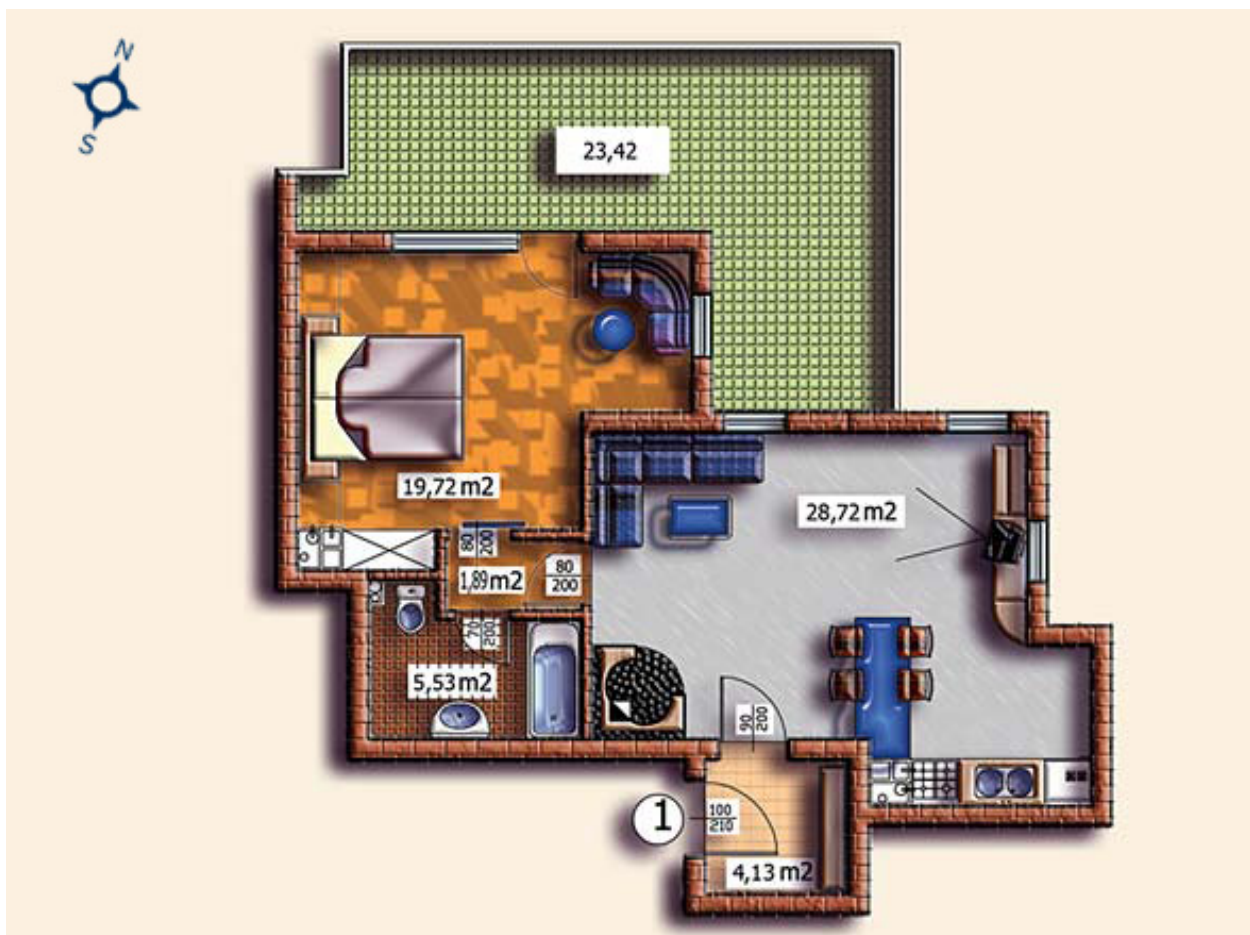
Parties communes : 11.52 sq.m.

Surface totale : 83.12 sq.m.

Totale + Parties communes : 94.64 sq.m.

Prix* : 121 021.00 EUR

** Vat inclure*





Crystal Spa Aparthotel

partie de golden valley village

